

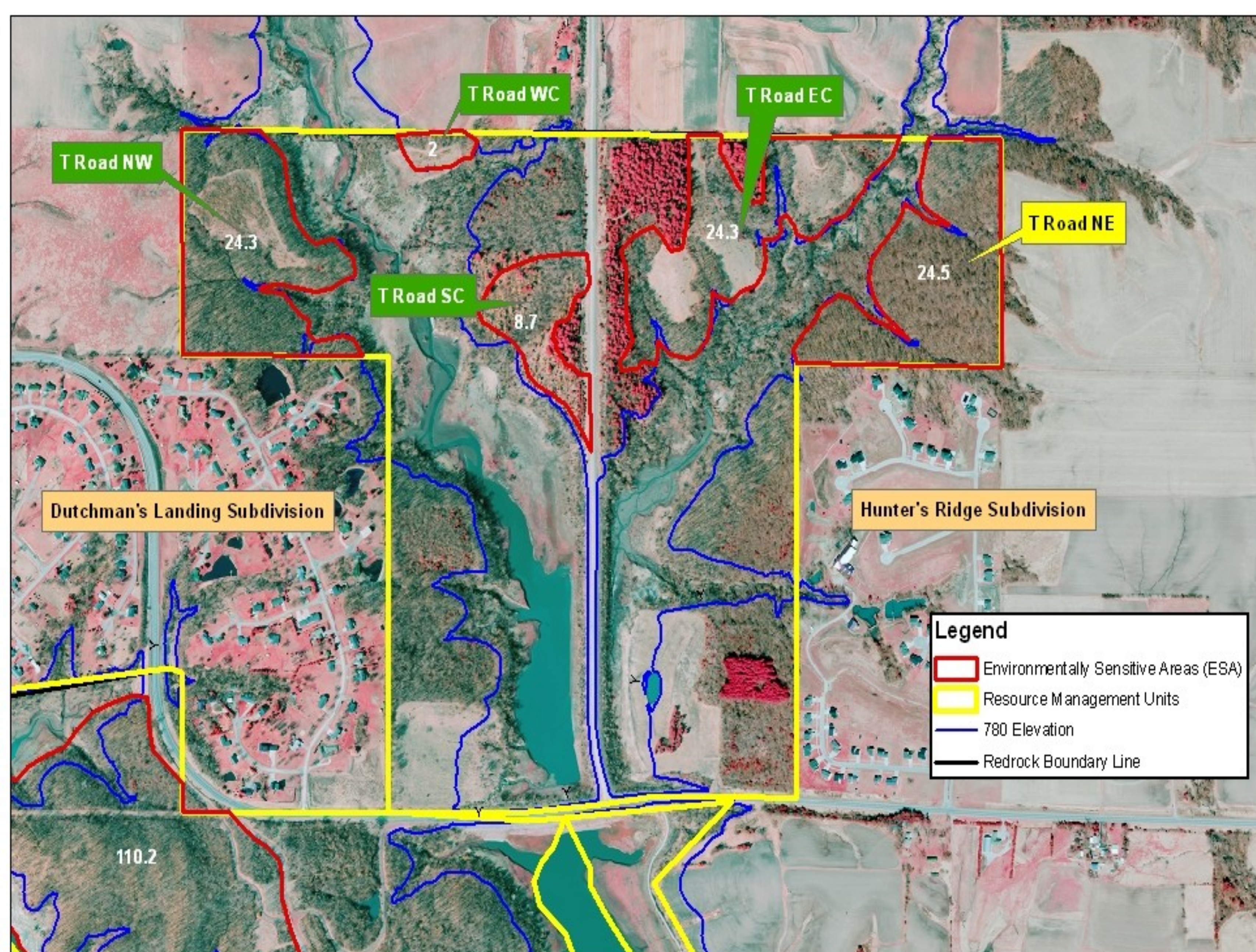
Red Rock Master Plan Focus Area - Healthy Environment

Goals:

- Protect Threatened Landscapes
- Manage Environmentally Sensitive Areas (ESAs) for Native Sustainable Resources

What is an ESA?

Environmentally Sensitive Areas are where scientific, ecological, cultural, geological or aesthetic features have been identified as listed below:



- Be a known location for state or federally listed species
- Have potential habitat for state or federally listed species
- Have important habitat for priority species as identified in state or regional plans
- Have high quality native plant Communities
- Demonstrates lack of serious disturbance
- Scenic or iconic landscapes
- Known or listed significant archaeological, historical, geological or cultural site

The ESA Vision

The “Vision” of an ESA after 25 years is to preserve, restore, or re-introduce historically indigenous flora and fauna to sustainable levels, especially those of a conservative status or greatest conservation need, by manipulating the vegetation and restoring the influence of historical processes on the landscape.