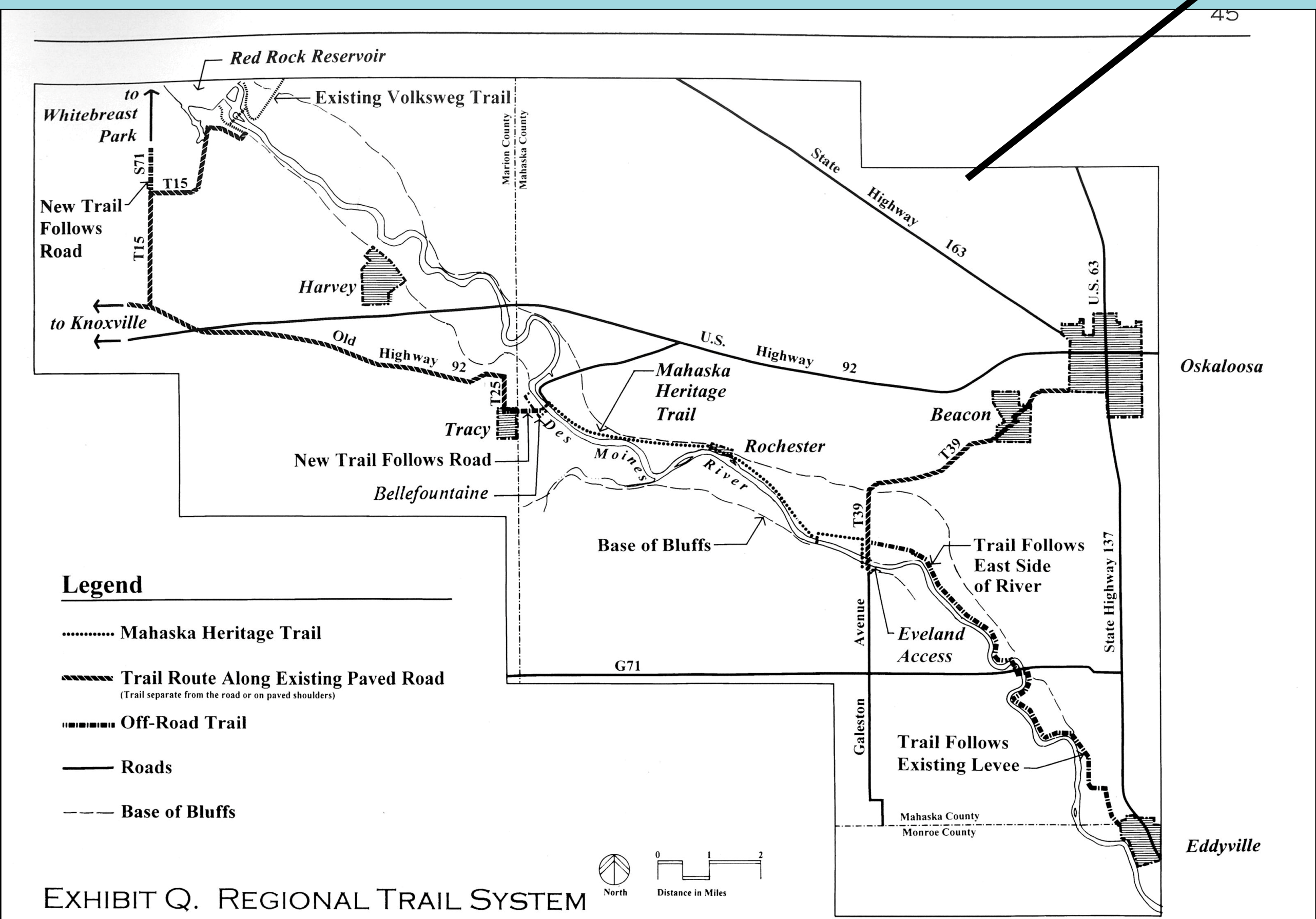
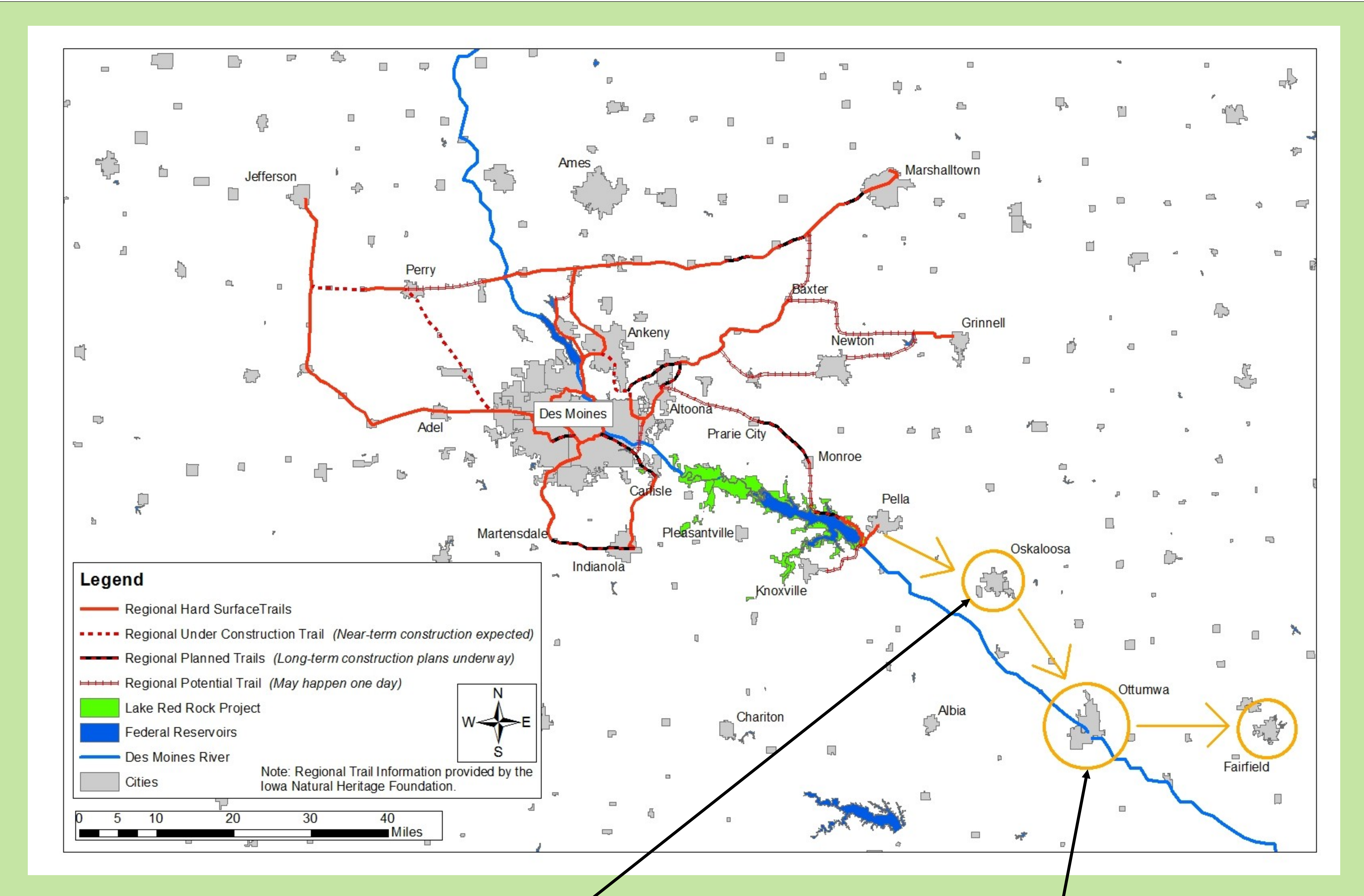


# Red Rock Master Plan

## Focus Area - Connections

Goal:  
Develop trail connections to area communities



### RESOURCES ALONG THE AMERICAN GOthic REGIONAL TRAIL

The proposed American Gothic Regional Trail is 24.27 miles long and will link four communities—Ottumwa, Eldon, Libertyville, and Fairfield, in two southern Iowa counties, Wapello and Jefferson. The project connects a network of 44 miles of existing trails in Ottumwa, Eldon, and trails in and around Fairfield.

Trail use to date along existing trails has been phenomenal, with an average of 40 users a day throughout the year. Linking these existing trail systems will enhance trail use in southern Iowa and promote economic development throughout the region.

The American Gothic House, located in Eldon, is the primary attraction. It is located halfway between Ottumwa and Fairfield. The house served as the backdrop to Grant Wood's famous painting, "American Gothic."

But the American Gothic House in Wapello County is only the hook. Once here, people will be in awe of the area's natural beauty. The route is lined with native timber and impressive limestone bluffs, rumored to once be the

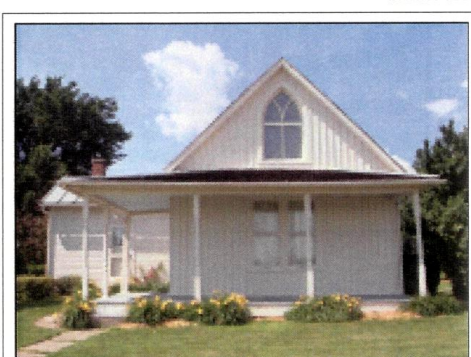
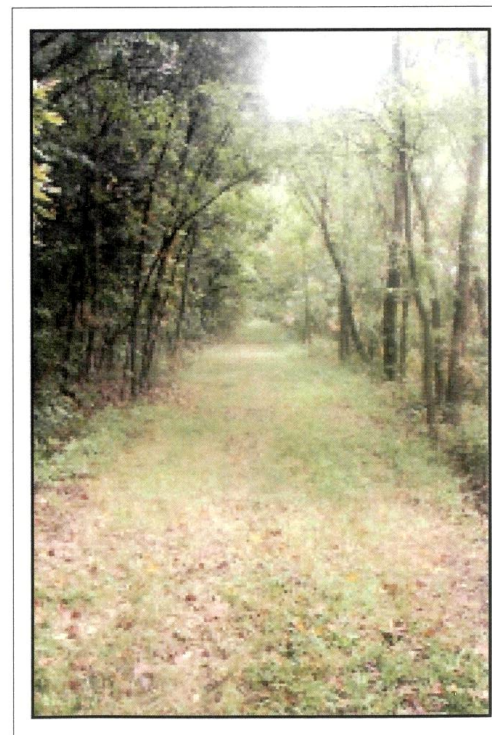
hideout for legendary bank robber Jesse James. The scenic Des Moines River can be seen from several sections of the trail and may be enjoyed year round. During the winter, bald eagles make the area their home. As the trail nears Fairfield, users will view expanses of rich Iowa farmland, some of the most fertile land in the world.

The area is rich in history, from native Indian tribes who settled in this area to an extensive rail system that provided an important link to commerce and industry. Within these two counties, 48 locations are listed on the the National Register of Historic Places.

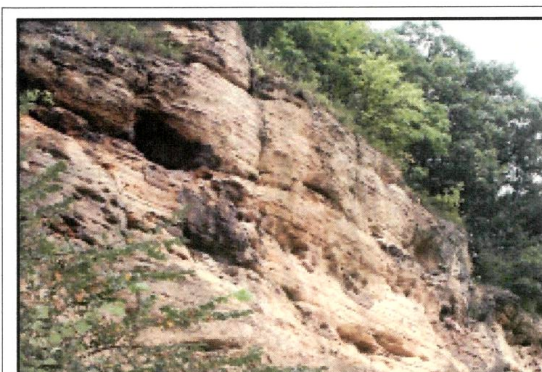


SCENIC BRIDGE IN FAIRFIELD

#### FOX HILLS



**AMERICAN GOthic HOUSE**  
The American Gothic House in Eldon is featured as the backdrop of Grant Wood's 1930 famous painting, "American Gothic." Since completion, the painting has become an American icon and the model for an unknown number of parodies. The American Gothic House is located along the proposed trail.



**GARRISON ROCK AND CLIFFLAND AREA**  
This area just east of Ottumwa consists primarily of rolling terrain of high quality oak and hickory timber and open ridges atop sandstone outcrops overlooking the Des Moines River valley. It is very important historically as a Native American gathering site. During the early 1900s, Garrison Rock was a must see site for all locals. Prairie and savanna restoration work is ongoing by the Wapello County Conservation Board.