

The Master Planning Process

What is a Master Plan?

A master plan is a vision and guidance document that looks out 25 - 50 years to guide current management decisions with the resources available in order to achieve our vision for the future. The master plan looks at management opportunities and constraints, site potential and limiting factors, user needs and characteristics, and then blends these components into a guidance document. The master plan is also a resource document that is based on current facts and trends to be used by managers to guide decisions in order to work towards a shared future vision of Lake Red Rock.



Why do we need a new Master Plan?



The first master plan for Lake Red Rock was completed in 1976 and has been used to guide recreational and environmental stewardship decisions during the past 35 years. The focus of the initial plan was to document existing conditions and to create a zoning plan to guide future development. The original objectives were 1) to provide diversified water-oriented recreation for central Iowa residents, 2) to establish and improve the Canada Geese distribution and hunting opportunities in the state, and 3) to assist water quality enhancement of the Des Moines River downstream of the project. A new master plan is needed to address current conditions, new objectives, and re-evaluate management opportunities for the future of these public lands. The previous master

plan and current plan did not and will not address water level management and flood control. A separate regulation manual is used to regulate discharge and storage at the reservoir.

Public Involvement in Master Planning Process

Public participation will be a priority in the current Master Planning process. We will be seeking public input from key stakeholders through a focus group process. In addition, open houses or public meetings will also be utilized to gather input from the general public. We really want to know what you want, what your vision for the future of the lake's recreation and natural resources might be, etc.



Lake Red Rock - 1105 North Highway T15 - Knoxville, IA 50138

Phone: (641) 828-7522 or (641) 628-8690

Website: www.lakeredrock.org

Email: redrockmasterplan@usace.army.mil

Master Plan Zoning

The master plan identifies zoning for Lake Red Rock. Public lands are allocated and classified into management categories which, based upon resources available and public needs, will provide for full utilization while protecting project resources. This zoning determines what types of development is permitted – for instance campgrounds are permitted in intensive use areas but not wildlife management zones. The 1976 Master Plan used slightly different zoning terminology than the new plan will use and also included detailed construction diagrams for campgrounds, picnic areas etc., this level of detail will not be outlined in the new plan.

We will again re-assess the project's environmental attributes, public needs etc. but will not be producing detailed site designs. Instead the focus will be on gathering public input and developing detailed natural resource inventories to guide in reassessing the future recreational needs and desired future condition for natural resources.

Current Zoning Categories*:

Project Operations. This classification category should include those lands required for the structure, operations center, office, maintenance compound and other areas that are used solely for project operations.

Recreation. Land developed for intensive recreational activities by the visiting public, including developed recreation areas and areas for concession, resort, and quasi-public development.

Mitigation. This will only include land acquired or designated specifically for mitigation.

Environmental Sensitive Areas. These are areas where scientific, ecological, cultural or aesthetic features have been identified. These areas must be considered by management to ensure the sensitive areas are not adversely impacted.

Multiple Resource Management. Lands managed for one or more of, but not limited to, these activities:

(a) Recreation - Low Density - low density recreation activities such as hiking, primitive camping, wildlife observation, hunting, or similar low density recreational activities.

(b) Wildlife Management General - fish and wildlife management activities. Lands in this sub-category shall be evaluated for consideration for lease or license to the Department of the Interior or the state or shall be designated for direct management by the Corps.





(c) Vegetative Management - management activities for the protection and development of forest and vegetative cover

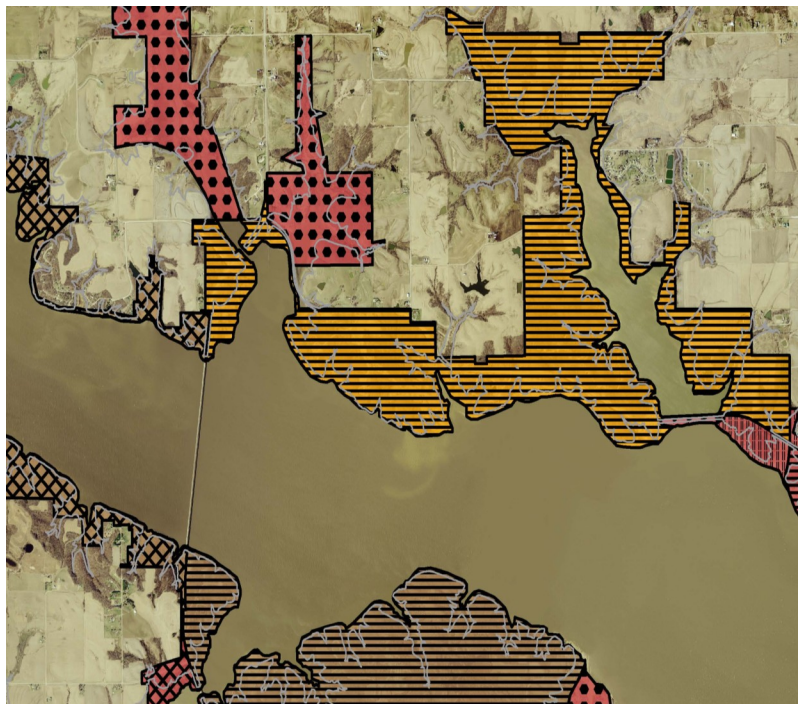
(d) Inactive and/or Future Recreation Areas - recreation areas planned for the future or that have been temporarily closed. These lands will be classified as multiple resource management in the interim.

(e) * Current zoning categories are slightly different than those used in 1976 planning.

Zoning Categories from 1976 Plan

Legend

—	780-Flood Pool
Land Use	
	Project Operation
	Operations:Recreation-Intensive Use
	Operations:Recreation-Low Density
	Operations:Reserve Forest Land
	Operations:Wildlife Management
Administered by	
	Iowa Dept. of Natural Resources
	Marion County Conservation Board
	Corps of Engineers



Example of zoning map from 1976 Master Plan - to view maps go to website.